

**OpenText™ OpenText™
LiquidOffice™ CE 20.2**

Release Notes

OpenText™ LiquidOffice

Release Notes

Rev.: April 2020

This documentation has been created for OpenText™ LiquidOffice CE 20.2.

It is also valid for subsequent software releases unless OpenText has made newer documentation available with the product, on an OpenText website, or by any other means.

Open Text Corporation

275 Frank Tompa Drive, Waterloo, Ontario, Canada, N2L 0A1

Tel: +1-519-888-7111

Toll Free Canada/USA: 1-800-499-6544 International: +800-4996-5440

Fax: +1-519-888-0677

Support: <https://support.opentext.com>

For more information, visit <https://www.opentext.com>

Copyright © 2020 Open Text. All rights reserved.

Trademarks owned by Open Text.

One or more patents may cover this product. For more information, please visit, <https://www.opentext.com/patents>

Disclaimer

No Warranties and Limitation of Liability

Every effort has been made to ensure the accuracy of the features and techniques presented in this publication. However, Open Text Corporation and its affiliates accept no responsibility and offer no warranty whether expressed or implied, for the accuracy of this publication.

Support

Visit the OpenText Customer Support web site at: <http://www.opentext.com/support>.

This web site provides contact information and details about the products, services, and support that OpenText offers.

Contents

1	Introduction	1
1.1	Release notes revision history	1
2	About OpenText LiquidOffice	2
2.1	New features	2
2.1.1	LiquidOffice release numbering changes	2
2.1.2	RESTful web service task	3
2.1.3	Form Fields	4
2.1.4	External Form HTML option	5
2.1.5	Access control enhancements	7
2.1.6	Barcode enhancements	9
2.1.7	Other updates	10
2.1.8	Updated platform support	10
2.1.9	Updated embedded technology	11
2.2	Discontinued and deprecated features	11
2.2.1	Discontinued platforms	11
2.2.2	Deprecated features	11
3	Packaging and documentation	13
3.1	Documentation updates	13
4	Supported environments and compatibility	14
4.1	LiquidOffice system requirements	14
4.2	LiquidOffice product compatibility	18
4.3	Language support	19
5	Installation and upgrade notes	20
5.1	Installation notes	20
6	Fixed issues	21
7	Known issues	22
8	Contact information	23

1 Introduction

These Release Notes provide an overview of LiquidOffice 20.2, including new features, delivery information, and supported platforms. OpenText recommends that you read these Release Notes in conjunction with the documentation included with the software package. If any conflicts exist, the Release Notes supersede the other documentation.

We also recommend that you check the OpenText My Support site (<https://support.opentext.com/>) for any patches or documentation updates that may have been posted after the initial release of this product.

1.1 Release notes revision history

Revision date	Sections revised	Description of revision
April 2020	First release	All new content
Sept 2020	Sections 4.1 and 4.2	Added support for Content Server 20.2 with patches applied

2 About OpenText LiquidOffice

OpenText LiquidOffice™ is an Intelligent Forms Automation solution that enables organizations to use rich web and PDF forms to collect, route, and process information.

With LiquidOffice, organizations can easily create intelligent forms to collect information from employees and customers. With that information, organizations can then use powerful routing and form processing capabilities to ensure information is validated, supplement information with data from other systems, route information for review and approval, and save information to back-end databases and applications.

LiquidOffice can completely automate forms-driven business processes for efficiency, in order to ensure that best practices are followed, and to improve customer satisfaction.

LiquidOffice includes the following key features:

Key feature	Description
Electronic form design	Quickly design intelligent web and PDF forms to collect information and documents for routing to people and systems, and integrate into business processes.
Anywhere / anytime access	Enable users to access forms and perform tasks from web, mobile, and integrated user interfaces.
Ad hoc routing	Simplify review and approval processes with user-driven ad hoc routing of forms, information, and documents.
Process modeling	Easily model a business process with a drag-and-drop user interface, leverage business rules and scripting to interact with people and systems, and simulate for testing and validation.
Business activity monitoring	Enable decision-makers to monitor business processes and understand what's happening across an organization by using analytics to optimize performance.
Integrated solutions	Manage processes from end to end by taking advantage of integration with OpenText TeleForm, OpenText Content Server, databases, and content management systems.
Audit and security	Securely connect employees, customers, and partners inside and outside an organization with authenticated access to forms and audit trails of activity.
Enterprise solution	Deliver solutions to the enterprise and beyond with a scalable and integrated platform that can support thousands of users, forms, and processes.

2.1 New features

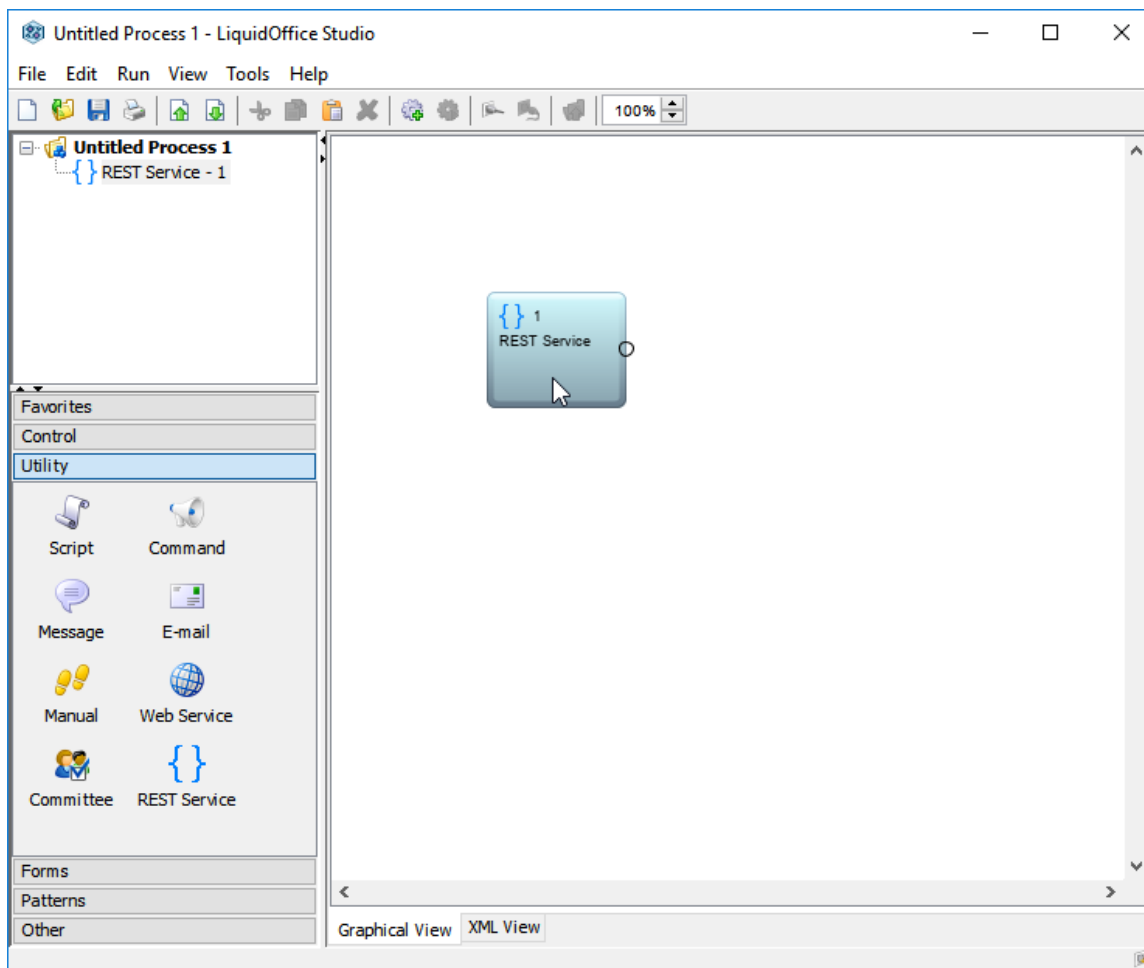
LiquidOffice 20.2 has several new features that enhance support for integrated form solutions, provide additional controls over accessible features, and improve quality.

2.1.1 LiquidOffice release numbering changes

LiquidOffice release numbering has changed to indicate the calendar year and quarter in which the release is made available. While there are several new features in the latest release, changing from 16.7 to 20.2 does not signify a major shift in the product or features.

2.1.2 RESTful web service task

A new REST Service Task has been added to Process Studio to make it easier to leverage RESTful Web Services in other applications from a LiquidOffice workflow process.



Many applications now use RESTful Web Services to enable access to information and capabilities from other applications, providing a way to deliver integrated solutions. LiquidOffice designers have always been able to create processes that leverage REST APIs using scripts; however, this process has required more advanced development expertise to implement.

Similar to the existing Web Service task that enables designers to configure access to SOAP Web Services, the new REST Service task enables designers to configure access to RESTful Web Services, making it easier to send a Request and get a Response from a REST API, and create an integrated solution. This set up enables a process to trigger an activity in another application, save data to another application, or request data from another application.

Designers can now simply configure the task to access a RESTful Web Service, include any header values and body needed in the request (which may contain data from the process using

substitution syntax), and map data in the response to process fields and attributes, including data in a JSON response.

You can find more information about the REST Service task in the Process Studio User Guide. In addition, you can see examples of processes that use the REST Service task in the SDK.

Note: This feature was introduced as a beta feature in 16.7 but is now fully supported, and has been enhanced to provide additional functionality. REST Service tasks added to processes in 16.7 will be recognized and continue to work as expected, however, enhanced features can now be used to simplify integration with RESTful Web Services. The REST Service task now includes the capability to map data included in a JSON Response directly to process fields and attributes.

2.1.3 Form Fields

To help designers quickly reference field information that is included on a form, a new **Form Fields** feature has been added to Portal.

The **Form Fields** feature provides detailed information about every field on a LiquidOffice form, including name, type, size, and other attributes. This feature can help designers when creating an External Web form or PDF form that will use LiquidOffice Virtual Submission capabilities to process the form. In this scenario, designers must ensure that external forms include all fields required to use the referenced LiquidOffice form and that the data submitted is formatted as expected.

To view form field information:

- Select a form (or process that includes an initial form) from Folders in Portal.
- In Portal select the **Design > Form Fields** menu option.

Name	Type	Entry Format	Si...	Title	Attributes	Description
VS__FormGUID	input (hidde...	Text			Hidden	
VS__Note	input (hidde...	Text			Hidden	
firstName	input (text)	Text	50	First name*	Required	
lastName	input (text)	Text	50	Last name*	Required	
emailAddress	input (text)	Text	50	Email address*	Required	
busPhone	input (text)	Template	14	Phone		
title	input (text)	Text	50	Title		
company	input (text)	Text	50	Company		
country	select	Single Selection Text	50	Country*	Required	
stateProv	select	Single Selection Text	50	State/Province		State / Pro...
ReasonforCont...	textarea	Text	250	Reason for contact*	Required	

Note that only users with the Administrator, Form Publisher, and Process Publisher role will be able to access this option.

Selecting the **Form Fields** option will display a table with the following information:

Column	Description
Name	The field name
Type	The HTML tags used for the field in the LiquidOffice HTML form
Entry Format	The type of input expected in the field
Size	The number of characters that can be entered in the field
Title	The field title
Attributes	Required, Read only, Hidden
Description	The field description

For more information about using external web & PDF forms with LiquidOffice, see the Virtual Submission documentation in *Management Console User Guide*.

2.1.4 External Form HTML option

Similar to the new **Form Fields** feature, the **External Form HTML** feature has been added to help designers create external web forms that can be submitted to and processed by LiquidOffice. This includes forms integrated into web pages on any website.

When creating an external web form that will be submitted to LiquidOffice, designers can take one of two approaches. The external web form can be created first (as a new or existing web page) and a LiquidOffice form and process can then be created. Alternatively a LiquidOffice form

and process can be created first, and an external web form created afterwards. In both cases, designers must ensure that external forms include the same fields and collect the same type of data as the referenced LiquidOffice form. To help with this scenario, a recent release included a new feature to import an existing external web form into Form Designer, ensuring the LiquidOffice form includes the same fields. The new External Form HTML feature helps the other way around, by creating HTML from an existing LiquidOffice form that can be used as an external web form, ensuring the External form includes the same fields.

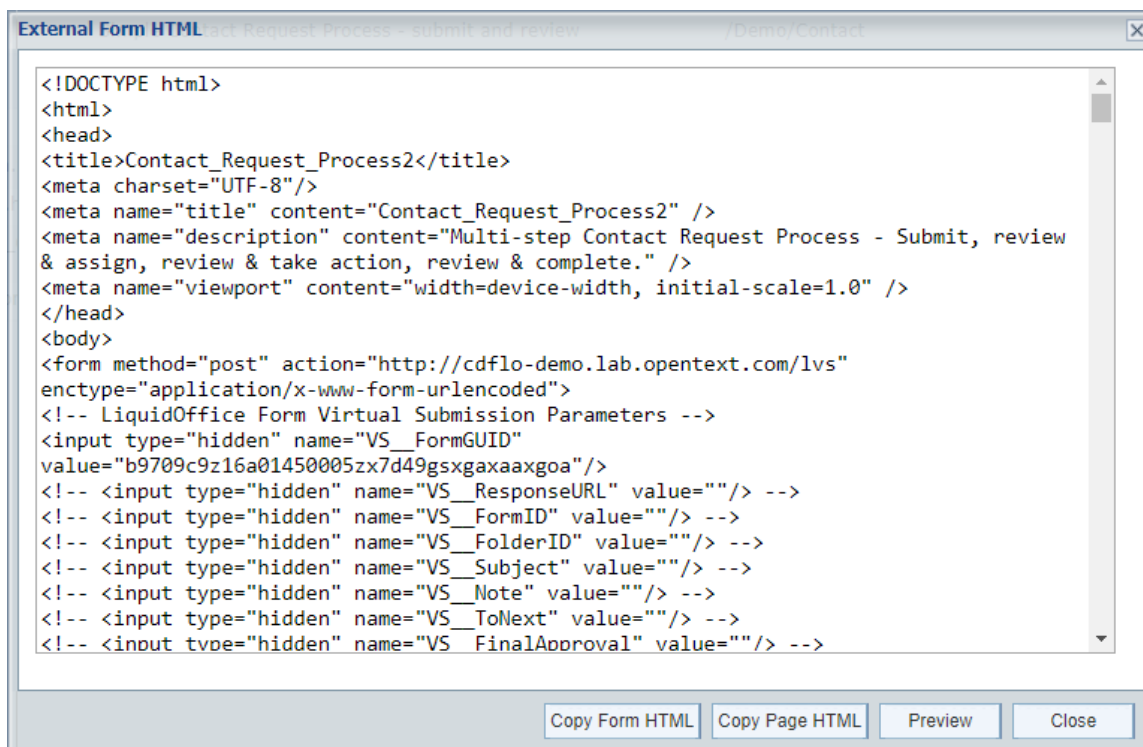
The HTML generated by this feature is a much simplified version of the HTML that is used in a LiquidOffice form:

- No CSS
- No Scripts
- Simplified layout – fields are simply included one after another
- No content that isn't essential for the form to be submitted (e.g. images, lines)
- No content that is unique to LiquidOffice forms and not supported in an external form (e.g. image viewer)

This approach makes it easier for an external form designer to include the generated HTML in an external web page and to define the style and layout as desired.

To access External Form HTML:

- Select a form (or process that includes an initial form) from Folders in Portal.
- In Portal select the **Design > External Form HTML** menu option



The screenshot shows a dialog box titled "External Form HTML" with a text area containing the following HTML code:

```
<!DOCTYPE html>
<html>
<head>
<title>Contact_Request_Process2</title>
<meta charset="UTF-8"/>
<meta name="title" content="Contact_Request_Process2" />
<meta name="description" content="Multi-step Contact Request Process - Submit, review
& assign, review & take action, review & complete." />
<meta name="viewport" content="width=device-width, initial-scale=1.0" />
</head>
<body>
<form method="post" action="http://cdflo-demo.lab.opentext.com/lvs"
enctype="application/x-www-form-urlencoded">
<!-- LiquidOffice Form Virtual Submission Parameters -->
<input type="hidden" name="VS_FormGUID"
value="b9709c9z16a01450005zx7d49gsxgaxaaxgoa"/>
<!-- <input type="hidden" name="VS_ResponseURL" value="" /> -->
<!-- <input type="hidden" name="VS_FormID" value="" /> -->
<!-- <input type="hidden" name="VS_FolderID" value="" /> -->
<!-- <input type="hidden" name="VS_Subject" value="" /> -->
<!-- <input type="hidden" name="VS_Note" value="" /> -->
<!-- <input type="hidden" name="VS_ToNext" value="" /> -->
<!-- <input type="hidden" name="VS_FinalApproval" value="" /> -->
</form>
</body>
</html>
```

At the bottom of the dialog box, there are four buttons: "Copy Form HTML", "Copy Page HTML", "Preview", and "Close".

Note that only users with the Administrator, Form Publisher, and Process Publisher role will be able to access this option.

Selecting the External Form HTML option will open a dialog box that displays the generated HTML and enables a designer to perform the following actions:

- Copy Page HTML: Copy the HTML for a complete page (including the standard <html>, <head> and <body> tags surrounding the <form> tags). This can be used to create a new web page with the form.
- Copy Form HTML: Copy the HTML for just the form (from <form> to </form>) to the clipboard. This can be used to integrate the form into an existing web page.
- Preview: Preview the generated Page HTML in a new browser window. You can even test that the form works as expected by filling in the previewed form and submitting it.

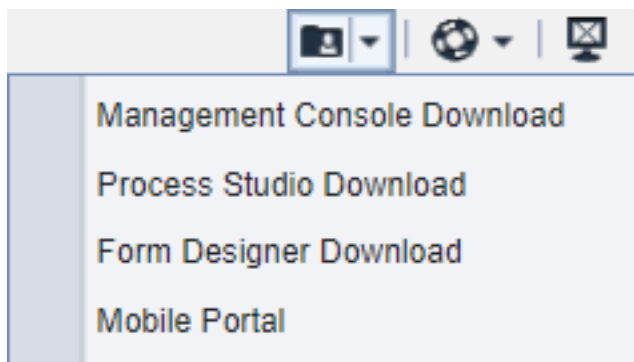
For more information about using external web forms with LiquidOffice, see the Virtual Submission documentation in *Management Console User Guide*.

2.1.5 Access control enhancements

New options have been added in this release to help administrators more easily control access to some features in LiquidOffice.

Portal Applications Menu

The Applications menu in Portal provides access to Mobile Portal as well as options to download installers for Management Console, Process Studio, and Form Designer. Administrator can now enable or disable this menu for other users by configuring the **Portal Applications Menu** option in Management Console.

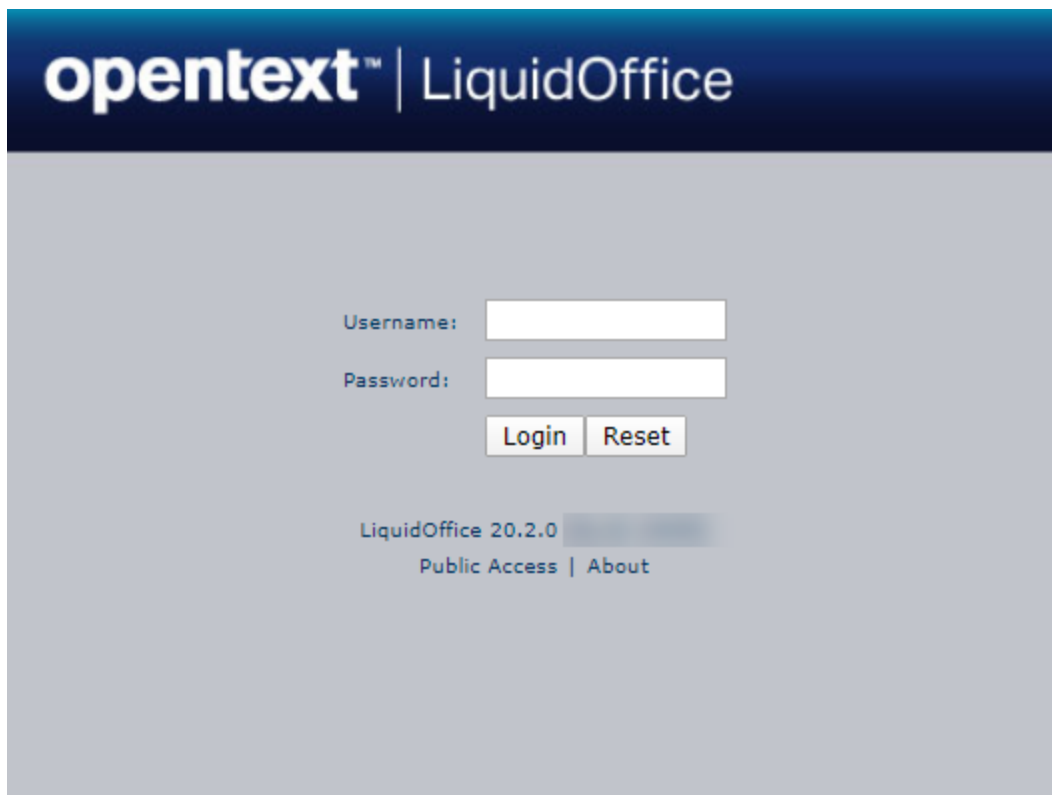


For new installations this option will be disabled by default. When upgrading, this option will be enabled by default so there is no change in behavior for existing implementations. Users with the Administrator role will still be able to access this option even when it is disabled for other users.

Public Access to Portal

Public Access is a feature that enables users to access the Portal and forms anonymously without being authenticated. This makes it easier to provide access to forms that an organization might want anyone to be able to access.

Administrators can now enable or disable this option by configuring the Public Access option in Management Console. When enabled, a **Public Access** link will be displayed on the Portal login page (replacing the **Folders** link in previous releases), and users will be able to access Portal without logging in. When disabled, a **Public Access** link will not be displayed on the Portal login page, and users will no longer be able to access Portal without logging in.



For new installations this option will be disabled by default. When upgrading, this option will be enabled by default so there is no change in behavior for existing implementations.

Help and documentation

A link to online Help is no longer displayed on the Portal login page.

The **Help** menu option is no longer displayed in the Portal for unauthenticated users using **Public Access**.

Content Security Policy

This release of LiquidOffice has added support for Content Security Policy that enables an administrator to set policies to control the type and origin of resources that are allowed to be loaded by a browser.

For example, with LiquidOffice, Content Security Policy can potentially determine if LiquidOffice forms and other components can be included in an iFrame of an external web page, and if external web pages, images, and videos can be displayed within a LiquidOffice form.

Important notes:

- Forms that use an HTML Viewer to display web pages, images, videos, or other resources from a different origin may no longer display that content as they did previously. The Content Security Policy might need to be updated appropriately for these to work.
- Standalone document URLs from a different origin will no longer display in the right pane of Portal. The Content Security Policy will need to be updated appropriately to allow them to display.
- Generally, loading web resources from different origins within LiquidOffice web applications will no longer work. To allow them to load successfully, the external hosts that web resources are loaded from must be added to the appropriate CSP directive.
- If the X-Frame-Options in the presentation or process web.xml file has been modified to a value other than the default sameorigin and you are upgrading from LiquidOffice 16.7 or earlier, then it will be ignored for browsers which support the CSP header. To retain the behavior of the X-Frame-Options setting in such browsers, update the CSP frame-ancestors directive to the equivalent value. For example, if X-Frame-Options was previously set as allow-from https://www.example1.com, then the CSP frame-ancestors directive needs to be updated to include https://www.example1.com.

For more information, see *Administration Guide*.

2.1.6 Barcode enhancements

Several enhancements have been made to improve support for JavaScript barcodes:

- The Code 128 barcode **Character Set** feature now works with JavaScript barcodes.
- The **Font** option can now be used with JavaScript barcodes.
- Error messages are now displayed if the input text is less than the required number of characters for JavaScript UPC and EAN barcodes.

2.1.7 Other updates

- **Folders** is now **Public Access**: The **Folders** link on the Portal login page has been renamed to **Public Access**.
- Default Folder changes: New installations of LiquidOffice no longer include the **Reports** folder, the **Transaction_Report**, the **TutorialForms** folder, or the **tutorial forms**. Tutorial Form templates can be found under Form Designer templates.
- Process Map: The Process Map that is displayed within Portal, Management Console, and Studio using the **Save As Image** option no longer includes a grid in the background.
- Microsoft Edge Browser: Support has been added for the new Microsoft Edge browser based on Chromium, and support for the Microsoft Edge Legacy browser continues for versions indicated below.

2.1.8 Updated platform support

LiquidOffice has added support for the following platform versions in this release:

- Red Hat Enterprise Linux 8
- CentOS Linux 8
- Java 13
- SQL Server 2019
- PostgreSQL 12.x
- OpenText Content Server 20.2

Important: The following patches must be applied to OpenText Content Server 20.2 for it to be supported with LiquidOffice:

- Patch number 162002232
- Patch number 162002735

- OTDS 16.6.2
- WebSphere 9
- WebLogic 12c R2
- Microsoft Edge (Chromium-based)
- Eclipse 4.13

2.1.9 Updated embedded technology

The following changes to embedded technologies are included in this release:

- TomEE 7.0.7—The embedded version of TomEE has been upgraded to 7.0.7.
- Rhino JavaScript library—The server-side JavaScript engine has been updated to version 1.7.11, which could have incompatibility with current scripts. Customers are advised to test all server-side JavaScript scripts they might have, to ensure they continue to work as expected.

2.2 Discontinued and deprecated features

The following features have been discontinued or deprecated.

2.2.1 Discontinued platforms

LiquidOffice has discontinued support for the following platforms versions:

- Apple Mac OS 10.10
- Apple iOS 12.1-12.3
- Microsoft Edge Legacy 20-39
- Mozilla Firefox 52-67
- Google Chrome 55-71
- Apple Safari 12.1-12.3

2.2.2 Deprecated features

LiquidOffice has deprecated the following features in this release:

Feature	Notes
Web Desktop	The LiquidOffice Portal was introduced in version 7.0, and is now the primary user interface for accessing forms, initiating workflow processes, and managing assignments. The Web Desktop has been retained in recent versions to enable customers to transition from the Web Desktop to the Portal user interface, but it will be removed in a future release. Customers are advised to migrate users from using the Web Desktop to the Portal.

Feature	Notes
Data Client	The Data Client was introduced to support data export in conjunction with the Web Desktop. The Data Client remains in this version of LiquidOffice, but as with the Web Desktop will be removed in a future release. Export connect agents can be used as an alternative to export data.
Applet barcodes	Barcodes can be added to forms using either Applet or JavaScript functionality. Applets are no longer supported by most browsers and so we recommend only publishing forms using JavaScript functionality for barcodes. Applet barcode support remains in this release to enable customers to migrate existing forms and use JavaScript for barcodes, but support for Applet barcodes will be removed in a future release.
Java Web Start	Java Web Start was used previously to access Management Console and Process Studio from the LiquidOffice Server, but these applications can and should now be installed independently without using Java Web Start. In addition, Java Web Start was used for form publishing from Form Designer. Note that Java Web Start is no longer supported in Java 11 and higher. Java Web Start functionality remained in recent versions of LiquidOffice to help customers transition but this functionality will be removed in a future release.
Manual Data Views	When Data Views were first introduced, the Portal could be configured to use Data Views using a manually updated configuration file. Subsequent releases enabled Data View creation and configuration directly from within the Portal. The original method of Data View creation and configuration remains in this release to enable customers to transition to Data Views created from the Portal, but this functionality will be removed in a future release.
WorkSite Integration	<p>The existing integration functionality remains in LiquidOffice to enable customers to continue using it with previously supported versions of WorkSite but no additional enhancements will be planned. This includes functionality associated with the WorkSite Export Connect Agent, WorkSite DMS Connect Agent, and WorkSite Lookup Connect Agent. Integration will be removed in a future release.</p> <p>OpenText partners are available to work with customers that continue to use LiquidOffice with WorkSite to provide assistance with integrated environments and upgrades to either product. Contact your account manager to learn more.</p>
Meridio Integration	The existing Meridio integration functionality remains in LiquidOffice to enable customers to continue using it with previously supported versions of Meridio but no additional enhancements will be planned. This includes functionality associated with the Meridio Export Connect Agent and Meridio DM Connect Agent. Integration will be removed in a future release.
Drools SDK Sample	The sample integration with Drools to support integrated business rules will not be enhanced and may be removed in a future release.
Dynamic Forms, Handcrafted Forms, & Eclipse Plugin	Dynamic and Handcrafted form capabilities were introduced to support the use of custom HTML forms with LiquidOffice. Virtual Submission capabilities have subsequently been introduced to provide an alternative way to use custom HTML forms with LiquidOffice, and customers are advised to use this method instead. Dynamic and handcrafted form capabilities remain in this version of LiquidOffice but might be removed in a future release.
Content Server eForms Management	Content Server eForms Management capabilities enable Content Server workflows to use LiquidOffice forms. LiquidOffice functionality that supports this integration (i.e. the Content Server Process Connect Agent) remains for supported versions of the Content Server eForms Management integration, but this functionality might be removed in a future release.
Paper Documents	Paper Document capabilities for Xerox Work Centre Pro remains to support existing customers but this functionality might be removed in a future release.

3 Packaging and documentation

Downloads and documentation for LiquidOffice are available on OpenText My Support (<https://support.opentext.com>).

3.1 Documentation updates

The following updates have been made to the documentation:

- The tutorial content has been updated to ensure accuracy of the content.
- The documentation has been updated to provide a summary of the differences between Applet and JavaScript barcodes for easier decision making when designing content.

4 Supported environments and compatibility

This section provides details about supported platforms, systems, and versions.

- [LiquidOffice system requirements](#)
- [“LiquidOffice product compatibility” on page 18](#)
- [“Language support” on page 19](#)

4.1 LiquidOffice system requirements

This section describes the system requirements for installing OpenText LiquidOffice.

- [“Operating system requirements” below](#)
- [“Hardware requirements” on the next page](#)
- [“Software requirements” on page 16](#)

Operating system requirements

Category	Operating system
Server	<ul style="list-style-type: none">• Microsoft Windows Server 2012 R2• Microsoft Windows Server 2016• Microsoft Windows Server 2019• Oracle Solaris 10• Oracle Solaris 11• Red Hat Enterprise Linux 6.5-6.10• Red Hat Enterprise Linux 7.x• Red Hat Enterprise Linux 8.x• CentOS Linux 7.x• CentOS Linux 8.x

Category	Operating system
Desktop client	<ul style="list-style-type: none"> • Microsoft Windows 7 SP1 • Microsoft Windows 8.1 • Microsoft Windows 10 • Apple macOS 10.11 and later (for Portal, Mobile Portal, Web Desktop, Management Console, and Process Studio only)
Mobile client	<ul style="list-style-type: none"> • Apple iOS 12.4 and later • Android 5.1 and later • Microsoft Windows 10

Hardware requirements

Category	Minimum hardware requirements
Process and presentation server hardware	<ul style="list-style-type: none"> • RAM—4 GB • Hard Drive—1GB free disk space
Database server hardware	<div style="border: 1px solid #ccc; padding: 5px; margin-bottom: 10px;"> <p>Note: These are general guidelines for using a database in a LiquidOffice environment. For information about the specific requirements for the database that you use, see the documentation for your database.</p> </div> <ul style="list-style-type: none"> • Processor— <ul style="list-style-type: none"> ◦ Minimum: 4 physical processors ◦ Recommended: 8 or more physical processors • RAM—8GB • Hard Drive—Recommended: Striped across at least 2 physical drives + redundancy. (Implies 4 physical drives and RAID 1+0)
Development workstation hardware	<ul style="list-style-type: none"> • RAM—1GB • Hard Drive—1 GB
Mobile devices	<ul style="list-style-type: none"> • Apple iPhone • Apple iPad • Android smartphone • Android tablet • Windows tablet

Software requirements

Category	Supported software
Technology platform	<p>The following technology platform software is supported for LiquidOffice Server, Process Studio, Management Console, and Form Designer:</p> <ul style="list-style-type: none"> • Java SE 8 Oracle JDK (32-bit and 64-bit) • Java SE 10 Oracle JDK • Java SE 11 Oracle JDK • Java SE 11 OpenJDK • Java SE 12 Oracle JDK • Java SE 12 OpenJDK • Java SE 13 Oracle JDK • Java SE 13 OpenJDK • Java SE 14 Oracle JDK • Java SE 14 OpenJDK <div style="border: 1px solid #ccc; padding: 10px; margin-top: 10px;"> <p>Note: LiquidOffice bundles Java only with the Management Console and Process Studio installers, otherwise Java must be installed separately.</p> <p>Form Designer requires Java for publishing. If multiple installations of Java are found, Form Designer determines which Java installation to use by searching the following locations, stopping with the first one found:</p> <ul style="list-style-type: none"> • Java pointed to by LFD_JAVA_HOME. • Most current installed Java 64-bit system. • Most current installed Java 32-bit system. • Java pointed to by JAVA_HOME. </div>
Database management system	<ul style="list-style-type: none"> • Microsoft SQL Server 2012 • Microsoft SQL Server 2014 • Microsoft SQL Server 2016 • Microsoft SQL Server 2017 • Microsoft SQL Server 2019 • Oracle Database 12c • Oracle Database 18c • Oracle Database 19c • PostgreSQL 9.4-9.6 • PostgreSQL 10.x • PostgreSQL 11.x • PostgreSQL 12.x • Apache Derby 10.x

Category	Supported software
Directory server	<ul style="list-style-type: none"> • Microsoft Active Directory 2012 • Microsoft Active Directory 2016 • Microsoft Active Directory 2019 • OpenText Directory Services 16.x • IBM Tivoli Directory Server 6.x
Content management system	<ul style="list-style-type: none"> • OpenText Content Server 16.x • OpenText Content Server 20.2 <div data-bbox="553 594 1333 793" style="border: 1px solid #ccc; padding: 10px; margin: 10px 0;"> <p>Important: The following patches must be applied to OpenText Content Server 20.2 for it to be supported with LiquidOffice:</p> <ul style="list-style-type: none"> ◦ Patch number 162002232 ◦ Patch number 162002735 </div> <ul style="list-style-type: none"> • Microsoft SharePoint 2016 • Microsoft SharePoint 2019 • Meridio 5.x (Deprecated as of version 20.2 and later) • WorkSite 9.x (Deprecated as of version 20.2 and later)
Application server (for presentation layer)	<ul style="list-style-type: none"> • Apache Tomcat 8.x • Apache Tomcat 9.x • IBM WebSphere Application Server 8.x • IBM WebSphere Application Server 9.x • Oracle WebLogic 12c • Oracle WebLogic 12c R2
Browser—desktop	<p>Browsers marked with an asterisk (*) have restrictions on their use.</p> <p>For information about Browser plugin support and Internet Explorer limitations, see <i>Administration Guide</i>.</p> <p>For more information about browser support, see Browser plugin support and Internet Explorer limitations.</p> <ul style="list-style-type: none"> • Microsoft Edge version 40 and later (both legacy EdgeHTML engine and new Chromium engine)* • Microsoft Internet Explorer 11* • Mozilla Firefox 68 and later • Apple Safari 11 and later • Google Chrome 72 and later*

Category	Supported software
Browser—mobile	<p>Browsers marked with an asterisk (*) have restrictions on their use.</p> <p>For information about Browser plugin support and Internet Explorer limitations, see <i>Administration Guide</i>.</p> <p>For more information about browser support, see Browser plugin support and Internet Explorer limitations.</p> <ul style="list-style-type: none"> • Apple Safari 12.4 and later* • Android browser 5.1 and later* • Google Chrome 72 and later* • Microsoft Edge version 40 and later (both legacy EdgeHTML engine and new Chromium engine)* • Microsoft Internet Explorer 11* <p>Note: For more information on designing forms for mobile devices, see <i>Form Designer User Guide</i>.</p>
PDF reader—desktop	<p>Adobe Acrobat Reader DC 15.x and later</p> <p>Note: For information about configuring browsers to display a PDF using the Adobe Reader plug-in, see the <i>Adobe Acrobat User Guide</i>.</p> <p>Note: Native browser PDF readers, such as those supplied by Google Chrome and Mozilla Firefox, do not support the ability to communicate with a server.</p>
PDF reader—mobile	None
Office applications	<ul style="list-style-type: none"> • Microsoft Outlook 2016 • Microsoft Outlook 2019
Integrated development environment for dynamic forms client	<ul style="list-style-type: none"> • Eclipse 4.6-4.13
Build tool for SDK samples	<ul style="list-style-type: none"> • Apache Ant 1.9.8 and later

4.2 LiquidOffice product compatibility

The section provides details about which versions of other OpenText products are compatible with this release of LiquidOffice.

Note: For the latest compatibility information for OpenText products, refer to the Compatibility Matrix (<https://knowledge.opentext.com/go/matrix>) on OpenText My Support.

Product name	Version	Notes
OpenText TeleForm	11.2 16.x	Formerly known as HP TeleForm, Autonomy TeleForm, and Cardiff TeleForm

Product name	Version	Notes
OpenText Content Server	16.x	Currently at 16.2.11
	20.2	<div style="border: 1px solid black; padding: 5px;"> <p>Important: The following patches must be applied to OpenText Content Server 20.2 for it to be supported with LiquidOffice:</p> <ul style="list-style-type: none"> • Patch number 162002232 • Patch number 162002735 </div>
OpenText Content Server eForms Management	16.0.0	OpenText Content Server integration that enables LiquidOffice forms to be used with a Content Server workflow.
OpenText MediaBin	16.2	—
OpenText Directory Services (OTDS)	16.x	—

4.3 Language support

LiquidOffice is currently localized in the following languages. Additional languages may be available in future releases.

Component	Languages					
	EN	ES	DE	FR	JA	PT-BR
LiquidOffice UI	B	UI	UI	UI	UI	UI

UI = user interface only

B = both user interface and online help

5 Installation and upgrade notes

This section provides additional installation and upgrade information, including related or third-party product information and any required critical patches.

5.1 Installation notes

Before you install LiquidOffice, review these additional installation notes and verify related product or third-party product requirements.

Form issues	If you encounter any issues with forms after upgrading, you should republish the affected forms.
Server-side JavaScript scripts	The server-side JavaScript engine has been updated to version 1.7.11 which could have incompatibility with current scripts. Customers are advised to test all server-side JavaScript scripts they might have, to ensure they continue to work as expected.
OTDS	If you are currently using OTDS and upgrading from LiquidOffice 16.2 to a later version, you must configure OTDS synchronization. For more information about configuring the OTDS synchronization, see <i>Management Console User Guide</i> .
BeanShell	As of release 16.7, BeanShell now follows block scope rules as per Java for variables. Variables typed or untyped are only accessible inside the block where they were declared.
Tomcat AJP connector	The Tomcat AJP connector has been disabled to enhance security for fresh and upgrade installations . If you use NTLM SSO, refer to <code>readme.htm</code> under <code><LiquidOffice_install_dir_ServerResources>/SDK/Samples/SingleSignOn/NTLM</code> for changes you need to make.
Single sign-on (SSO)	If you're using single sign-on (SSO) with <code>SSOStaticBean</code> , to ensure that your environment works as expected and remains secure, you must set the Public URL Base server setting in Management Console. This set up is required if one of the following is true: <ul style="list-style-type: none">• Your LiquidOffice presentation server is deployed on a separate machine• You have a non-standard deployment in which the <code>SSOStaticBean</code> does not automatically build the proper URL to redirect back to LiquidOffice If you're using SSO with <code>RemoteBean</code> , to ensure that your environment is secure, you must deploy the <code>remoteIoserver.properties</code> file to the SSO host and set a property inside the file to the URL to be used by the <code>RemoteBean</code> to redirect back to LiquidOffice. For more information about using single sign-on with <code>SSOStaticBean</code> and <code>RemoteBean</code> , see <i>Programming Guide</i> .
Apache Tomcat Connector for IIS	The Apache Tomcat Connector for IIS (<code>isapi_redirect.dll</code>) in the NTLM SSO SDK sample has been upgraded to enhance security. If you are using the Tomcat connector for single sign-on, update to use the latest version.
Forms with tables	Changes have been implemented in this release to help enhance the security of forms that contain tables. To take advantage of these changes, you must republish any existing forms that contain tables.
Java 13 or later	We've observed in some circumstances that LiquidOffice Server running on Java 13 or later may require more system resources than when running on previous versions of Java. If you plan to upgrade the version of Java that you use, OpenText recommends testing your application to understand if there is an impact.

6 Fixed issues

This section provides information about past issues that have been fixed in this release.

Issue number	Issue description
LO-21211	The Windows service for the LiquidOffice server failed to start when a 32-bit JDK is used for the server.
LO-21191	Exceptions and other log messages from the embeddable Process Engine do not get logged anywhere. Information on how to enable and configure Process Engine logging has been added to the embedded Process Engine documentation.
LO-21219	Attachment file name with the ampersand (&) character caused the list box (attachments) items to disappear.
LO-21269	In rows added to a dynamic table, the background color of standard and flat buttons was not displayed.
LO-21304	When radio groups are used in collapsible tables, the radio button order was altered.
LO-21366	When creating a connection in OTDS, the LiquidOffice user name was case sensitive.
LO-21588	In the Programming guide, in the Access Attachments process script example, the getURL invocation is incorrectly mentioned in lowercase.

7 Known issues

This section provides information about known issues in this release.

Issue number	Issue description
LO-17537	In some situations, when using LiquidOffice with Java 8, customers might notice a degradation of performance in LiquidOffice 16.2 and later compared to 7.8. Performance of these versions of LiquidOffice is typically improved by using Java 10 and later. As always, prior to upgrading a production environment, customers are advised to upgrade a test environment and to include performance testing that reproduces a typical load to understand if there is an impact.
LO-17866	Attachment lists do not appear correctly in flattened PDF files.
LO-18201	Attachment lists do not appear correctly on mobile browsers.
LO-18846	The installer does not auto-detect the location of Java JDK 10 and later. You must manually select the location of your JDK installation.
LO-19656	Unable to upgrade installed versions of Process Studio and Management Console
LO-19701	Process Studio and Management Console do not get completely uninstalled if they are installed in any location other than the default location used by the installer.
LO-22049	<p>Under certain conditions, if you are using Java 12 and later with a LiquidOffice cluster, you may see frequent member disappeared messages in the log. This does not cause any issues. If the frequent messages are a concern, you may increase the heartbeat reception timeout as follows.</p> <p>On each member of the cluster:</p> <ol style="list-style-type: none">1. Open <code>server.xml</code> in <code><LO_install_dir>/Server/xmlbase/conf/</code>.2. Find the <code>Membership</code> element and increase the value of its <code>dropTime</code> attribute. For example increase the value in increments of 1000 and test to determine if this reduces the number of log messages.3. Save the changes.4. Restart the LiquidOffice server.

8 Contact information

OpenText Corporation
275 Frank Tompa Drive
Waterloo, Ontario
Canada, N2L 0A1

OpenText My Support: <https://support.opentext.com>

For more information, visit www.opentext.com