



OpenText™ LiquidOffice™

Release Notes

OpenText LiquidOffice Documentation

Release 16.7

OpenText™ LiquidOffice

Release Notes

Rev.: October 2019

This documentation has been created for software version 16.7.

It is also valid for subsequent software versions as long as no new document version is shipped with the product or is published at <https://knowledge.opentext.com>.

Open Text Corporation

275 Frank Tompa Drive, Waterloo, Ontario, Canada, N2L 0A1

Tel: +1-519-888-7111

Toll Free Canada/USA: 1-800-499-6544 International: +800-4996-5440

Fax: +1-519-888-0677

Support: <https://support.opentext.com>

For more information, visit <https://www.opentext.com>

Copyright © 2019 Open Text. All rights reserved.

Trademarks owned by Open Text.

One or more patents may cover this product. For more information, please visit, <https://www.opentext.com/patents>

Disclaimer

No Warranties and Limitation of Liability

Every effort has been made to ensure the accuracy of the features and techniques presented in this publication. However, Open Text Corporation and its affiliates accept no responsibility and offer no warranty whether expressed or implied, for the accuracy of this publication.

Support

Visit the OpenText Customer Support web site at: <http://www.opentext.com/support>.

This web site provides contact information and details about the products, services, and support that OpenText offers.

Contents

1	Introduction	1
1.1	Release notes revision history	1
2	About OpenText LiquidOffice	2
2.1	New features	2
2.1.1	HTML form import	2
2.1.2	JavaScript barcodes	4
2.1.3	Flat button style	5
2.1.4	RESTful Web Service task (BETA feature)	6
2.1.5	Configurable form HTML language enhancements	8
2.1.6	Other updates	9
2.1.7	Updated platform support	10
2.1.8	Updated Embedded Technology	10
2.2	Discontinued and deprecated features	11
2.2.1	Discontinued platforms	11
2.2.2	Deprecated features	11
3	Packaging and documentation	12
3.1	Documentation updates	12
4	Supported environments and compatibility	13
4.1	LiquidOffice system requirements	13
4.2	LiquidOffice product compatibility	17
4.3	Language support	17
5	Installation and upgrade notes	18
5.1	Installation notes	18
6	Fixed issues	19
7	Known issues	20
8	Contact information	21

1 Introduction

These Release Notes provide an overview of LiquidOffice 16.7, including new features, delivery information, and supported platforms. OpenText recommends that you read these Release Notes in conjunction with the documentation included with the software package. If any conflicts exist, the Release Notes supersede the other documentation.

We also recommend that you check the OpenText My Support site (<https://support.opentext.com/>) for any patches or documentation updates that may have been posted after the initial release of this product.

1.1 Release notes revision history

Revision date	Sections revised	Description of revision
October 2019	First release	All new content

2 About OpenText LiquidOffice

OpenText LiquidOffice™ is an Intelligent Forms Automation solution that enables organizations to use rich web and PDF forms to collect, route, and process information.

With LiquidOffice, organizations can easily create intelligent forms to collect information from employees and customers. With that information, organizations can then use powerful routing and form processing capabilities to ensure information is validated, supplement information with data from other systems, route information for review and approval, and save information to back-end databases and applications.

LiquidOffice can completely automate forms-driven business processes for efficiency, in order to ensure that best practices are followed, and to improve customer satisfaction.

LiquidOffice includes the following key features:

Key Feature	Description
Electronic form design	Quickly design intelligent web and PDF forms to collect information and documents for routing to people and systems, and integrate into business processes.
Anywhere / anytime access	Enable users to access forms and perform tasks from web, mobile, and integrated user interfaces.
Ad hoc routing	Simplify review and approval processes with user-driven ad hoc routing of forms, information, and documents.
Process modeling	Easily model a business process with a drag-and-drop user interface, leverage business rules and scripting to interact with people and systems, and simulate for testing and validation.
Business activity monitoring	Enable decision-makers to monitor business processes and understand what's happening across an organization by using analytics to optimize performance.
Integrated solutions	Manage processes from end to end by taking advantage of integration with OpenText TeleForm, OpenText Content Server, databases, and content management systems.
Audit and security	Securely connect employees, customers, and partners inside and outside an organization with authenticated access to forms and audit trails of activity.
Enterprise solution	Deliver solutions to the enterprise and beyond with a scalable and integrated platform that can support thousands of users, forms, and processes.

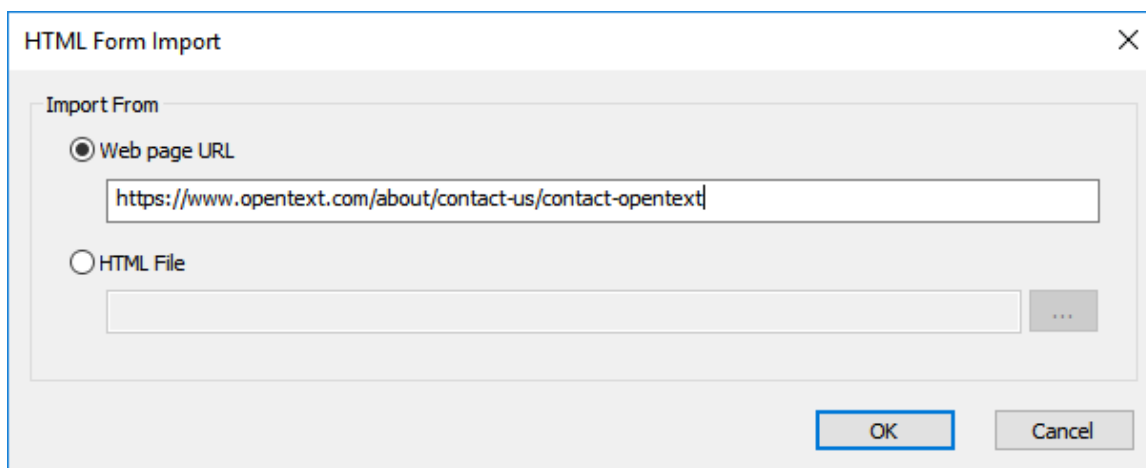
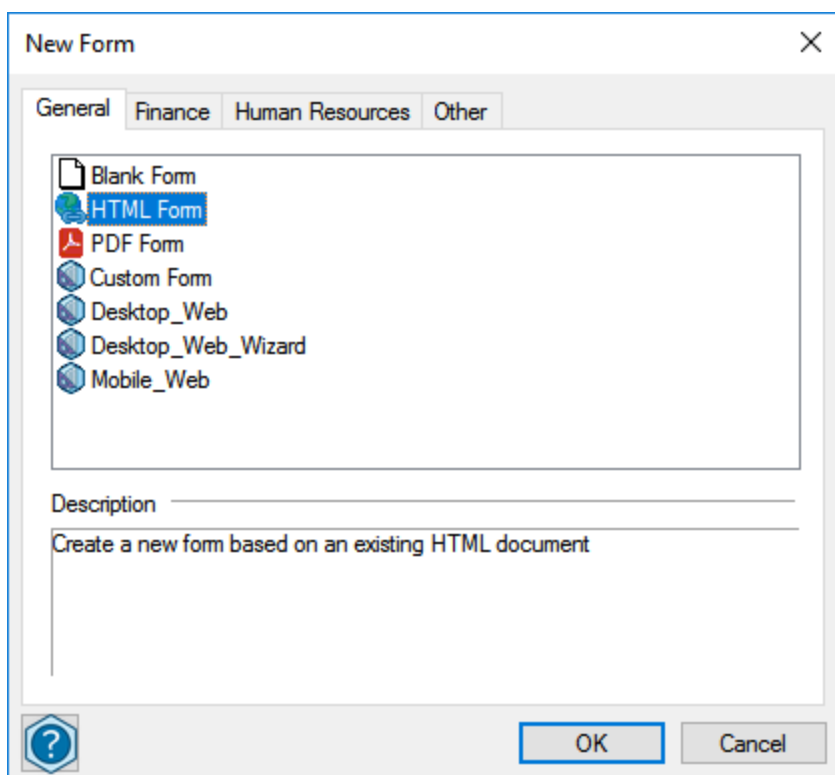
2.1 New features

LiquidOffice 16.7 has several new features that enhance support for integrated form solutions, help designers create richer web forms, and improve quality.

2.1.1 HTML form import

A new feature has been added to the LiquidOffice Form Designer that enables LiquidOffice forms to be generated from an existing web page created by any application on any accessible website or local folder.

Simply select an existing web page that includes a form and a new LiquidOffice form will be created with the same form fields and in most cases with the same field labels, values, and attributes.



This feature makes it easier to migrate an existing web form to a LiquidOffice form where you can take advantage of the advanced features to deliver richer and more flexible forms.

In addition, this feature makes it much easier and faster to deliver integrated form solutions. LiquidOffice 16.6 introduced features that enable external forms (e.g. web forms created by other applications hosted on a website) to be submitted to and processed by LiquidOffice. This new feature enables a form designer to quickly create a LiquidOffice form that mirrors an

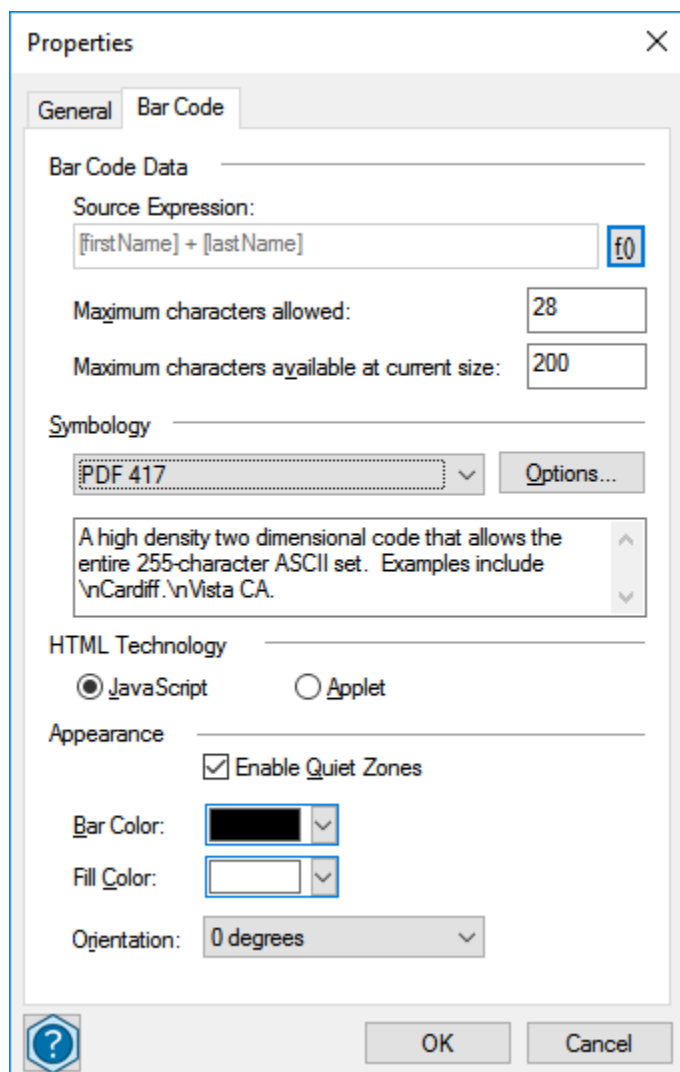
external form to collect information when the external form is submitted. The information submitted from the external form can then be processed by LiquidOffice.

Note that this feature does not import style or layout information from an existing web page. The purpose of this feature is to enable designers to quickly create LiquidOffice forms from existing web forms, and as needed leverage the advanced layout capabilities in Form Designer to deliver a richer and more flexible user experience with LiquidOffice HTML and PDF forms.

2.1.2 JavaScript barcodes

Form Designer now includes the option to publish HTML forms that include barcodes generated from JavaScript instead of Java applets.

In recent years support for Java applets has been removed from many modern browsers and from newer versions of Java, limiting user access to capabilities that require Java applets such as LiquidOffice barcodes. Enabling barcodes to be rendered on a form using JavaScript instead of Java applets means that most users with a modern browser will be able to view barcodes on LiquidOffice forms.



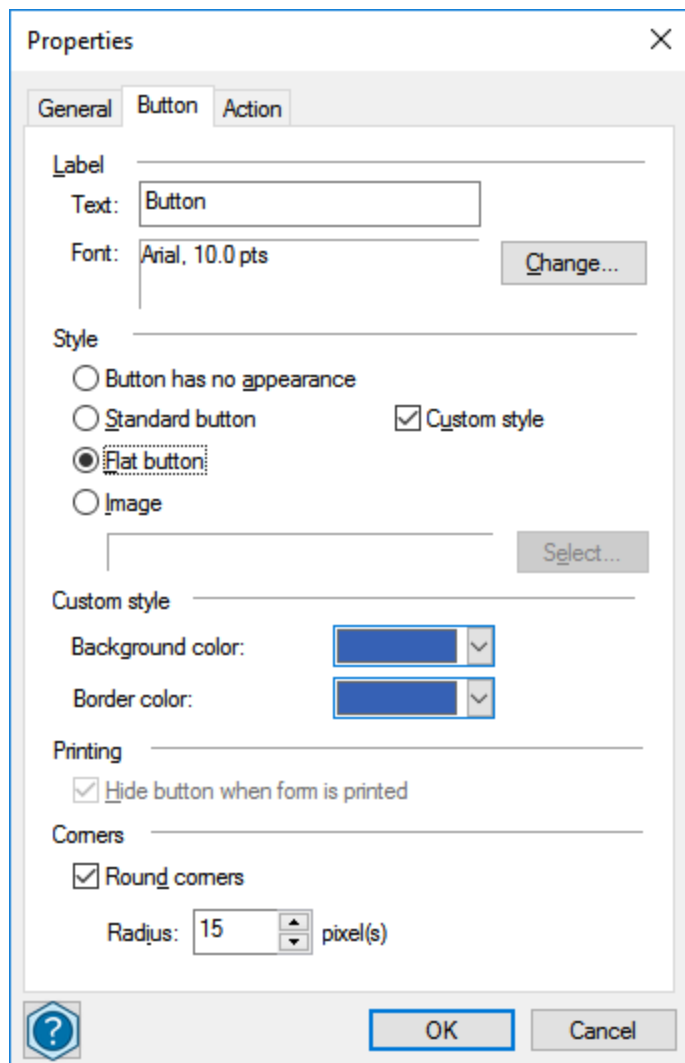
Support for Java applet barcodes remains so that published forms using this capability will continue to work as expected. However, it's recommended that customers modify forms to use JavaScript barcodes and republish those forms to provide access to a larger number of users.

2.1.3 Flat button style

A new style option has been added to Buttons in Form Designer that enable a "Flat" appearance.



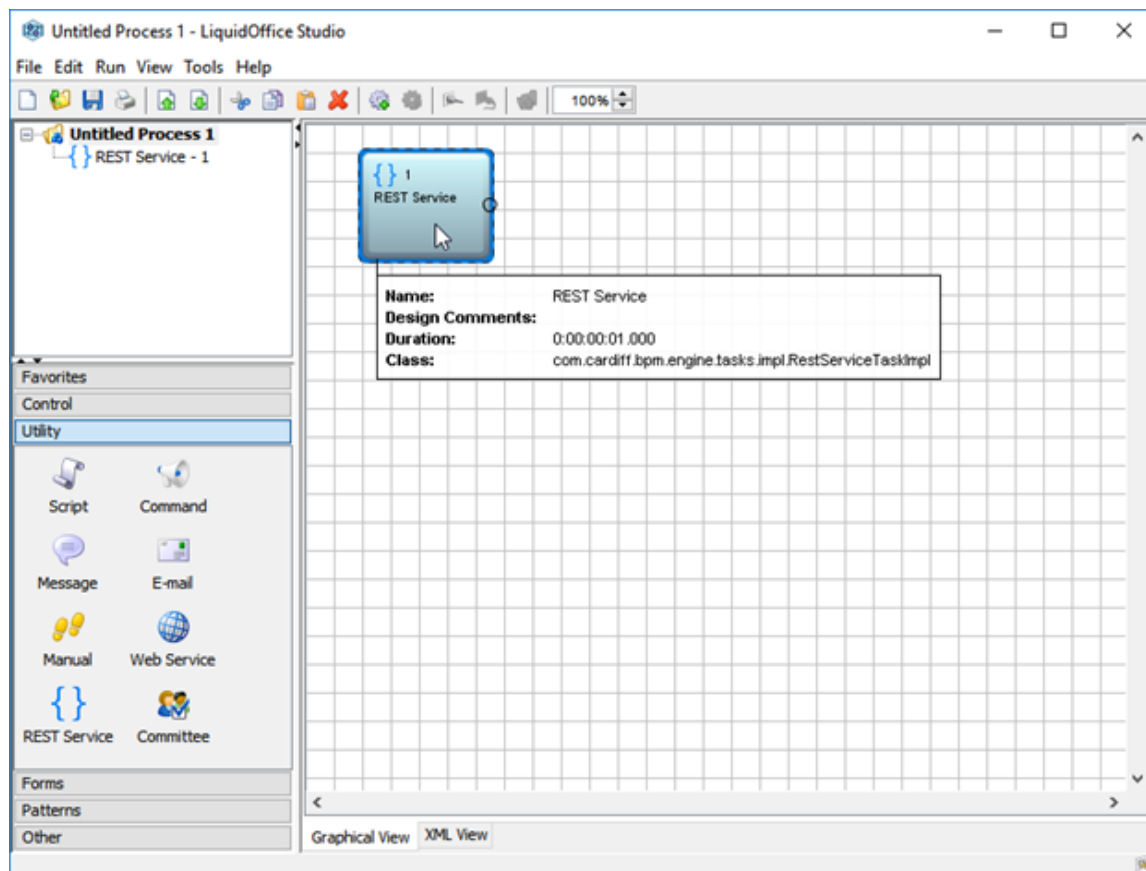
Standard LiquidOffice buttons have a more traditional raised button style and more of a 3-D appearance. Introducing the Flat button style makes it easier to create buttons without this effect, which was possible previously only when using the Image or No Appearance styles.



Some of the template forms included with Form Designer and the SDK have been updated to use Flat buttons.

2.1.4 RESTful Web Service task (BETA feature)

A new REST Service Task has been added to Process Studio that makes it easier to leverage RESTful Web Services in other applications from a LiquidOffice workflow process.



Many applications now use RESTful Web Services to enable access to information and capabilities from other applications, providing a way to deliver integrated solutions. LiquidOffice workflow process designers can create processes that leverage REST APIs using scripts but this can require more advanced development expertise to implement.

Similar to the existing Web Service Task that enables designers to configure access to SOAP Web Services, the new REST Service Task enables designers to configure access to RESTful Web Services, making it easy to send a Request and get a Response from a REST API. Designers can then easily take the Response and use information it contains within a workflow process.

Important: This feature is included only as a BETA feature intended to provide a preview of a feature that will be included in a future release. Enhancements are planned to provide access to more granular information from a RESTful Web Service Response and to APIs that access this information.

While every effort will be made to retain the functionality and APIs used with the BETA feature in future releases, changes may be made that require alterations to processes that use this BETA feature when it is released for general availability (e.g. scripts that use APIs for this Task). Caution is advised when using this feature since processes that use this Task may not work as expected after LiquidOffice is upgraded by a future release.

This BETA feature is not enabled by default. Designers can enable this feature by selecting Tools/Options from the Process Studio menu, and adding the REST Service Task to a Drawer from the Gallery tab.

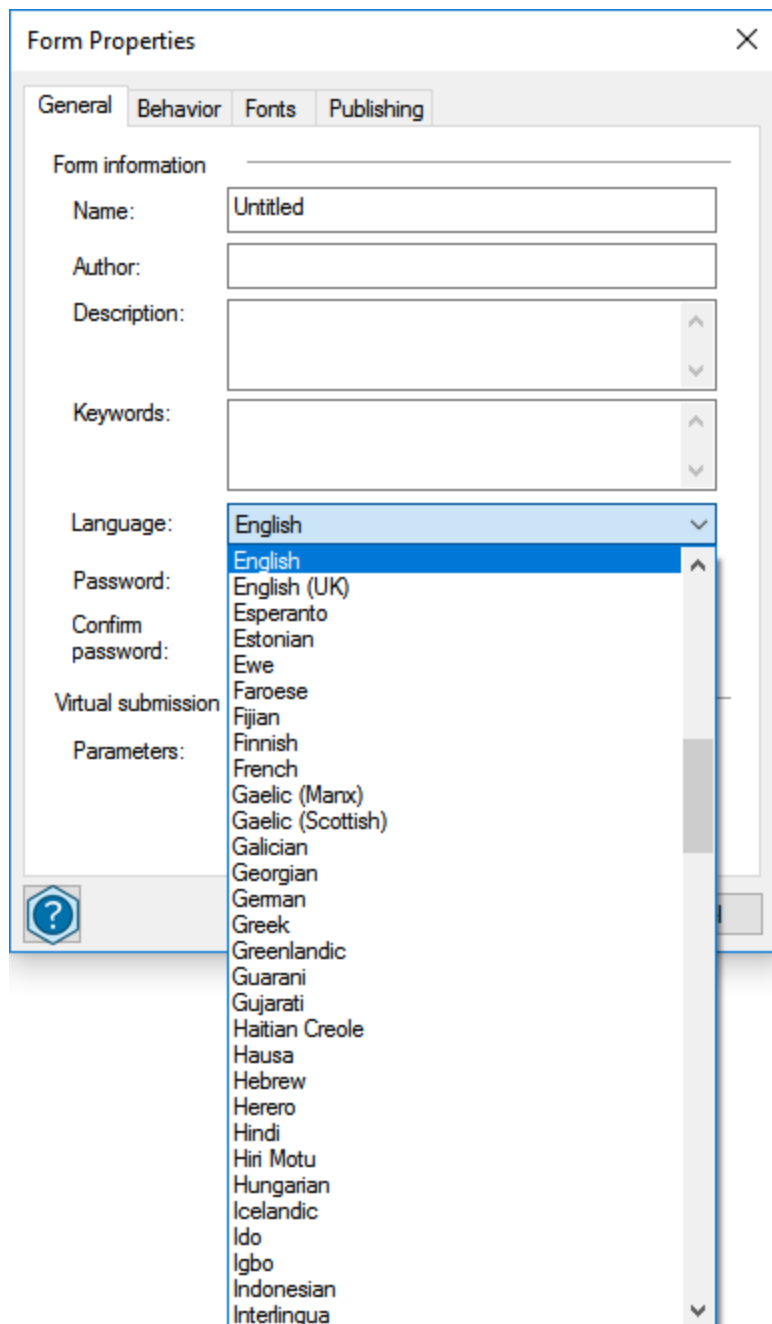
2.1.5 Configurable form HTML language enhancements

Enhancements have been made to the Form Language option accessible from Form Designer. The number of languages accessible has increased significantly so that the most commonly used languages are now selectable.

The language selected determines the following:

- **HTML Form Language:** this is the html “lang” attribute included with the HTML tag of LiquidOffice forms which browsers use to determine things such as the language used for screen readers and which search engines use to return language specific results.
- **LiquidOffice UI Language:** some user interface elements such as messages displayed after field validation and form tool bar elements use this value.
- **Spell Check Language:** this is the language used by Form Designer when performing a spell check.

The language selected is used to determine the HTML Form Language but only supported languages may be used with the LiquidOffice UI and Spell Check feature. English is used if the language selected is not supported for these features.



2.1.6 Other updates

Several other new features have also been introduced in this release.

- Downloadable installs from Web Desktop: When Process Studio or Management Console are selected from Web Desktop, the behavior has changed to download installation software instead of launching the applications using Java Web Start.

- Virtual Submit performance improvements: Changes have been made to improve performance of processing files submitted for Virtual Submit.
- Public URL Base Configuration: A new configurable option has been added to Management Console Settings that enables a publicly accessible URL to be specified for the LiquidOffice Server. This setting may be used to generate email links for example as well as other external references that are created.
- Process Studio WorkSite Tasks are no longer enabled by default: The Create Workspace and Create Folder Tasks used for integration with WorkSite are no longer included in a drawer by default. They can still be added using Tools/Options and adding the Tasks from the Gallery tab. For information about WorkSite deprecation, see "[Discontinued and deprecated features](#)" on the next page.
- Updated label for UCC/EAN-128 barcodes in Form Designer: UCC/EAN-128 barcodes were renamed GS1-128 (UCC/EAN-128) in Form Designer in order to reflect the updates to the industry standard.

2.1.7 Updated platform support

LiquidOffice has added support for the following platform versions in this release:

- CentOS Linux 7.x (server OS)
- Apple iOS 12.1 (Mobile Client OS)
- Android 5.1 (Mobile Client OS)
- Java SE 12 Oracle JDK
- Java SE 12 OpenJDK
- Oracle Database 18c and 19c
- PostgreSQL 11
- Microsoft SharePoint 2019
- Apple Safari 12.1
- Android browser 5.1
- Microsoft Office 2019
- Eclipse 4.9, 4.10, 4.11, 4.12
- OpenText Content Server EP6 (16.2.8)

2.1.8 Updated Embedded Technology

The following changes to embedded technologies are included in this release:

- TomEE 7.0.6: The embedded version of TomEE has been upgraded to 7.0.6.

2.2 Discontinued and deprecated features

The following features have been discontinued or deprecated.

2.2.1 Discontinued platforms

LiquidOffice has discontinued support for the following platforms versions:

- Apple iOS 10-12 (Mobile Client OS)
- Android 4.4-5 (Mobile Client OS)
- Apple Safari 10-12
- Android browser 5.0
- Microsoft Outlook 2013

2.2.2 Deprecated features

LiquidOffice has deprecated the following features in this release:

- HP/iManage WorkSite/Work integration: The existing integration functionality remains in LiquidOffice to enable customers to continue using it with previously supported versions of WorkSite but no additional enhancements will be planned.

OpenText partners are available to work with customers that continue to use LiquidOffice with WorkSite to provide assistance with integrated environments and upgrades to either product. Contact your account manager to learn more.

- Meridio integration: The existing integration functionality remains in LiquidOffice to enable customers to continue using it with previously supported versions of Meridio but no additional enhancements will be planned.
- Web Desktop: The LiquidOffice Portal was introduced in version 7.0, and is now the primary user interface for accessing forms, initiating workflow processes, and managing assignments. The Web Desktop has been retained in recent versions to enable customers to transition from the Web Desktop to the Portal user interface. Moving forward, new features are planned only for the Portal and not for the Web Desktop. Future releases are unlikely to include the Web Desktop. Customers are advised to migrate users from using the Web Desktop to the Portal.

3 Packaging and documentation

Downloads and documentation for LiquidOffice are available on OpenText My Support (<https://support.opentext.com>).

3.1 Documentation updates

The following updates have been made to the documentation:

- All documentation is now accessible from a single web page, to allow more accessibility to all LiquidOffice documentation and easier documentation searching. The documentation still includes features such as context sensitive help and individual PDFs for offline use, but provides a single interface from which you can access and navigate between any information in the LiquidOffice documentation set for ease of navigation and interaction between LiquidOffice product knowledge.
- The *Server Performance White Paper* has been updated with information based on recent testing using LiquidOffice 16.6 and Java 11.
- The *Form Designer User Guide* and *Management Console User Guide* have been updated to reflect improvements in style and structure.
- The distributed components are now listed in the copyright notice.

4 Supported environments and compatibility

This section provides details about supported platforms, systems, and versions.

- [LiquidOffice system requirements](#)
- ["LiquidOffice product compatibility" on page 17](#)
- ["Language support" on page 17](#)

4.1 LiquidOffice system requirements

This section describes the system requirements for installing OpenText LiquidOffice.

- ["Operating system requirements" below](#)
- ["Hardware requirements" on the next page](#)
- ["Software requirements" on page 15](#)

Operating system requirements

Category	Operating system
Server	<ul style="list-style-type: none">• Microsoft Windows Server 2012 R2• Microsoft Windows Server 2016• Microsoft Windows Server 2019• Oracle Solaris 10• Oracle Solaris 11• Red Hat Enterprise Linux 6.5-6.10• Red Hat Enterprise Linux 7.x• CentOS Linux 7.x
Desktop client	<ul style="list-style-type: none">• Microsoft Windows 7 SP1• Microsoft Windows 8.1• Microsoft Windows 10• Apple macOS 10.10 and later (for Portal, Mobile Portal, Web Desktop, Management Console, and Process Studio only)

Category	Operating system
Mobile client	<ul style="list-style-type: none"> • Apple iOS 12.1 and later • Android 5.1 and later • Microsoft Windows 10

Hardware requirements

Category	Minimum hardware requirements
Process and presentation server hardware	<ul style="list-style-type: none"> • RAM—4 GB • Hard Drive—1GB free disk space
Database server hardware	<div style="border: 1px solid #ccc; padding: 5px; margin-bottom: 10px;"> <p>Note: These are general guidelines for using a database in a LiquidOffice environment. For information about the specific requirements for the database that you use, see the documentation for your database.</p> </div> <ul style="list-style-type: none"> • Processor— <ul style="list-style-type: none"> • Minimum: 4 physical processors • Recommended: 8 or more physical processors • RAM—8GB • Hard Drive—Recommended: Striped across at least 2 physical drives + redundancy. (Implies 4 physical drives and RAID 1+0)
Development workstation hardware	<ul style="list-style-type: none"> • RAM—1GB • Hard Drive—1 GB
Mobile devices	<ul style="list-style-type: none"> • Apple iPhone • Apple iPad • Android smartphone • Android tablet • Windows tablet

Software requirements

Category	Supported software
Technology platform	<p>The following technology platform software is supported for LiquidOffice Server, Process Studio, Management Console, and Form Designer:</p> <ul style="list-style-type: none"> • Java SE 8 Oracle JDK (32-bit and 64-bit) • Java SE 10 Oracle JDK • Java SE 11 Oracle JDK • Java SE 11 OpenJDK • Java SE 12 Oracle JDK • Java SE 12 OpenJDK <div style="border: 1px solid black; padding: 10px; margin-top: 10px;"> <p>Note: LiquidOffice bundles Java only with the Management Console and Process Studio installers, otherwise Java must be installed separately.</p> <p>Form Designer requires Java for publishing. If multiple installations of Java are found, Form Designer determines which Java installation to use by searching the following locations, stopping with the first one found:</p> <ul style="list-style-type: none"> • Java pointed to by LFD_JAVA_HOME. • Most current installed Java 64-bit system. • Most current installed Java 32-bit system. • Java pointed to by JAVA_HOME. </div>
Database management system	<ul style="list-style-type: none"> • Microsoft SQL Server 2012 • Microsoft SQL Server 2014 • Microsoft SQL Server 2016 • Microsoft SQL Server 2017 • Oracle Database 12c • Oracle Database 18c • Oracle Database 19c • PostgreSQL 9.4-9.6 • PostgreSQL 10.x • PostgreSQL 11.x • Apache Derby 10.x
Directory server	<ul style="list-style-type: none"> • Microsoft Active Directory 2012 • Microsoft Active Directory 2016 • Microsoft Active Directory 2019 • OpenText Directory Services 16.x • Oracle Internet Directory • IBM Tivoli Directory Server 6.x

4 Supported environments and compatibility

Category	Supported software
Content management system	<ul style="list-style-type: none"> • OpenText Content Server 16.x • Microsoft SharePoint 2016 • Microsoft SharePoint 2019 • Meridio 5.x • WorkSite 9.x
Application server (for presentation layer)	<ul style="list-style-type: none"> • Apache Tomcat 8.x, 9.x • IBM WebSphere Application Server 8.x • Oracle WebLogic 12c
Browser—desktop	<p>Browsers marked with an asterisk (*) have restrictions on their use.</p> <p>For information about Browser plugin support and Internet Explorer limitations, see <i>Administration Guide</i>.</p> <ul style="list-style-type: none"> • Microsoft Edge 20 and later* • Microsoft Internet Explorer 11* • Mozilla Firefox 52 and later • Apple Safari 11 and later • Google Chrome 55 and later*
Browser—mobile	<p>Browsers marked with an asterisk (*) have restrictions on their use.</p> <p>For information about Browser plugin support and Internet Explorer limitations, see <i>Administration Guide</i>.</p> <ul style="list-style-type: none"> • Apple Safari 12.1 and later* • Android browser 5.1 and later* • Google Chrome 55 and later* • Microsoft Edge 20 and later* • Microsoft Internet Explorer 11* <div style="border: 1px solid black; padding: 5px; margin-top: 10px;"> <p>Note: For more information on designing forms for mobile devices, see <i>Form Designer User Guide</i></p> </div>
PDF reader—desktop	<p>Adobe Acrobat Reader DC 15.x and later</p> <div style="border: 1px solid black; padding: 5px; margin-top: 10px;"> <p>Note: To configure browsers to use the Adobe Reader plug-in, see https://helpx.adobe.com/acrobat/using/display-pdf-in-browser.html</p> </div> <div style="border: 1px solid black; padding: 5px; margin-top: 10px;"> <p>Note: Native browser PDF readers, such as those supplied by Google Chrome and Mozilla Firefox, do not support the ability to communicate with a server.</p> </div>
PDF reader—mobile	None
Office applications	<ul style="list-style-type: none"> • Microsoft Outlook 2016 • Microsoft Outlook 2019

Category	Supported software
Integrated development environment for dynamic forms client	<ul style="list-style-type: none"> Eclipse 4.6-4.12
Build tool for SDK samples	<ul style="list-style-type: none"> Apache Ant 1.9.8 and later

4.2 LiquidOffice product compatibility

The section provides details about which versions of other OpenText products are compatible with this release of LiquidOffice.

Note: For the latest compatibility information for OpenText products, refer to the Compatibility Matrix (<https://knowledge.opentext.com/go/matrix>) on OpenText My Support.

Product name	Version	Notes
OpenText TeleForm	11.2 16.x	Formerly known as HP TeleForm, Autonomy TeleForm, and Cardiff TeleForm
OpenText Content Server	16.x	Currently at 16.2.8
OpenText Content Server eForms Management	16.0.0	OpenText Content Server integration that enables LiquidOffice forms to be used with a Content Server workflow.
OpenText MediaBin	16.2	—
OpenText Directory Services (OTDS)	16	—

4.3 Language support

LiquidOffice is currently localized in the following languages. Additional languages may be available in future releases.

Component	Languages					
	EN	ES	DE	FR	JA	PT-BR
LiquidOffice UI	B	UI	UI	UI	UI	UI

UI = user interface only

B = both user interface and online help

5 Installation and upgrade notes

This section provides additional installation and upgrade information, including related or third-party product information and any required critical patches.

5.1 Installation notes

Before you install LiquidOffice, review these additional installation notes and verify related product or third-party product requirements.

Form issues	If you encounter any issues with forms after upgrading, you should republish the affected forms.
Java JDBC/ODBC Bridge	<p>The JDBC/ODBC bridge was removed in Java 8 and is no longer supported with current versions of Java. This means the JDBC/ODBC Connect Agent will no longer work correctly after upgrading to Java 8 or later. Customers are advised to use alternative drivers and Connect Agents. To help with migration from JDBC/ODBC drivers, it is possible to copy the JDBC/ODBC bridge from Java 7 into Java 8, Java 10, or Java 11 and continue to use it. Copying the Java 7 bridge will not work with Java 12 and later versions.</p> <p>For instructions on how to copy the JDBC/ODBC bridge, see <i>Management Console User Guide</i>.</p>
OTDS	<p>If you are currently using OTDS and upgrading from LiquidOffice 16.2 to a later version, you must configure OTDS synchronization.</p> <p>For more information about configuring the OTDS synchronization, see <i>Management Console User Guide</i>.</p>
BeanShell	BeanShell now follows block scope rules as per Java for variables. Variables typed or untyped are only accessible inside the block where they were declared.

6 Fixed issues

This section provides information about past issues that have been fixed in this release.

Issue number	Issue description
LO-12191	Cannot download Form Designer, Management Console, or Process Studio when presentation and process server are separated
LO-18277	Spaces are removed between multiple styles in a Text Box
LO-18724	When running the server on Java 10 or 11, messages like the following no longer appear in the event log at the server start up: <code>Unable to determine if command class: java/lang/Object</code>
LO-20120	Portal issues after opening standalone PDF document in Firefox
LO-20448	Configurator fails to continue if you select an OpenJDK GA release as your JDK
LO-20509	Outlook integration doesn't work with Outlook 2013
LO-20524	Data submitted to Content Server includes NULL field values
LO-20535	German translation errors
LO-20550	Image Viewer highlight operation is not working as expected

7 Known issues

This section provides information about known issues in this release.

Issue number	Issue description
LO-17537	In some situations, when using LiquidOffice with Java 8, customers might notice a degradation of performance in LiquidOffice 16.2 and later compared to 7.8. Performance of these versions of LiquidOffice is typically improved by using Java 10 or 11. As always, prior to upgrading a production environment, customers are advised to upgrade a test environment and to include performance testing that reproduces a typical load to understand if there is an impact.
LO-17866	Attachment lists do not appear correctly in flattened PDF files.
LO-18201	Attachment lists do not appear correctly on mobile browsers.
LO-18846	The installer does not auto-detect the location of Java JDK 10 and later. You must manually select the location of your JDK installation.
LO-19656	Unable to upgrade installed versions of Process Studio and Management Console
LO-19701	Process Studio and Management Console do not get completely uninstalled if they are installed in any location other than the default location used by the installer.
LO-21044	Code 128 barcodes have a character set limitation with JavaScript Technology. The newly added JavaScript technology does not allow explicit selection of character set, it only supports the Auto-mode.
LO-21056	Font selection does not work with JavaScript technology, the default font is used with fixed size of 8 pt (points).

8 Contact information

OpenText Corporation
275 Frank Tompa Drive
Waterloo, Ontario
Canada, N2L 0A1

OpenText My Support: <https://support.opentext.com>

For more information, visit www.opentext.com